

Madison, Wisconsin

CITY OF MADISON

CITY ENGINEERING DIVISION

DEPARTMENT OF PUBLIC WORKS

PLAN OF PROPOSED IMPROVEMENT

MINERAL POINT ROAD - YELLOWSTONE DRIVE TRAFFIC SIGNAL ASSESSMENT DISTRICT

CITY PROJECT NO. 84024

CONTRACT NO. ~~8008~~
8014

INDEX OF SHEETS

SHEET NO. E-1	ELECTRICAL PLAN INTERSECTION CONDUIT
SHEET NO. E-2	ELECTRICAL PLAN INTERSECTION CONDUIT (FAR)
SHEET NO. PM-1	PAVEMENT MARKING PLAN EPOXY

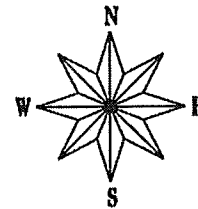
PLOT SCALE: _____

PLOT NAME: _____

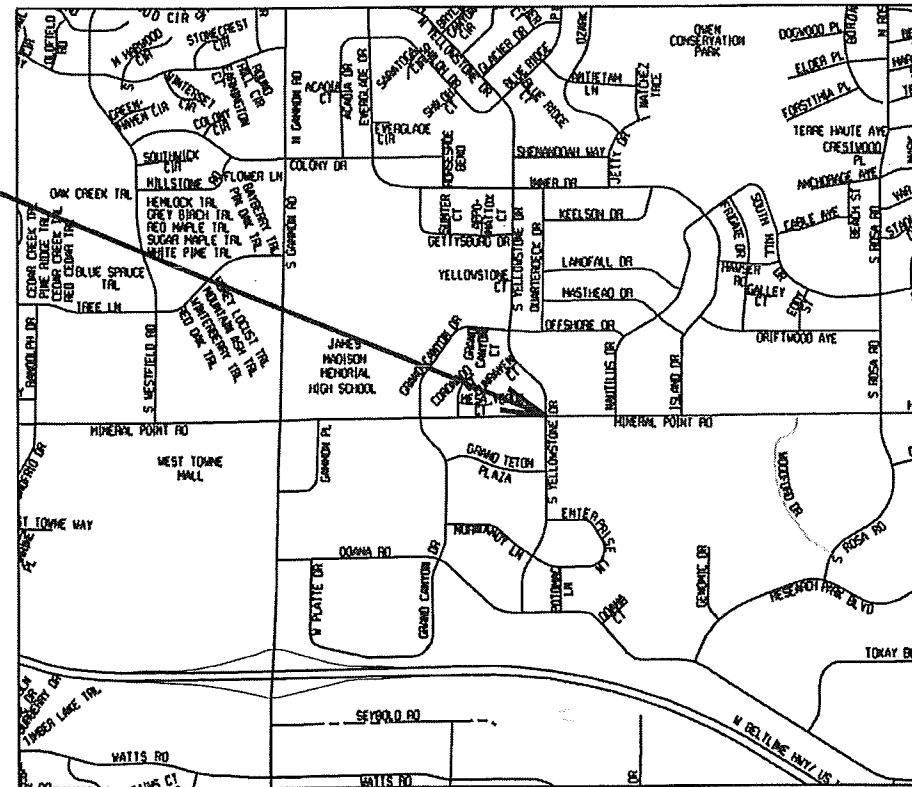
REV. DATE: _____

ORIGINATOR: CITY OF MADISON, STREETS DIVISION

PROJECT
LOCATION



CONVENTIONAL SIGNS	
FIELD VERIFY ALL UTILITY LOCATIONS	
GAS	— G —
STORM SEWER	— ST —
SANITARY SEWER	— SAN —
WATER	— W —
OVERHEAD ELECTRIC	— OH —
POWER POLE	□



PUBLIC IMPROVEMENT PROJECT APPROVED

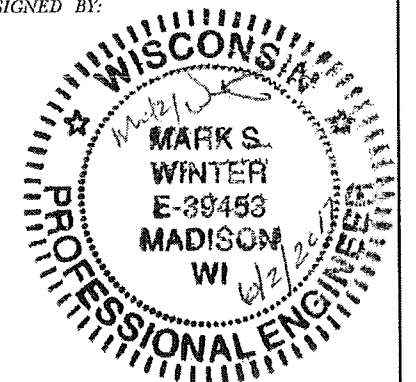
NOVEMBER 1, 2016

BY THE COMMON COUNCIL
OF MADISON, WISCONSIN

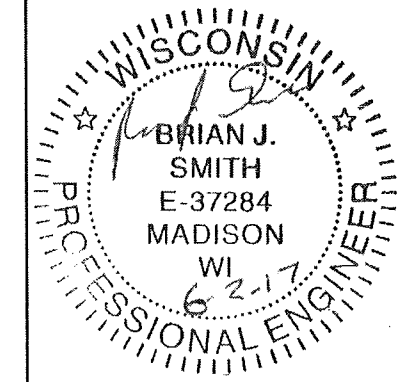
PUBLIC IMPROVEMENT DESIGN
APPROVED BY:

Christy Rose 6-22-17
City Engineer Date

PAVEMENT MARKING &
TRAFFIC CONTROL
DESIGNED BY:



LIGHTING & SIGNALS
DESIGNED BY:

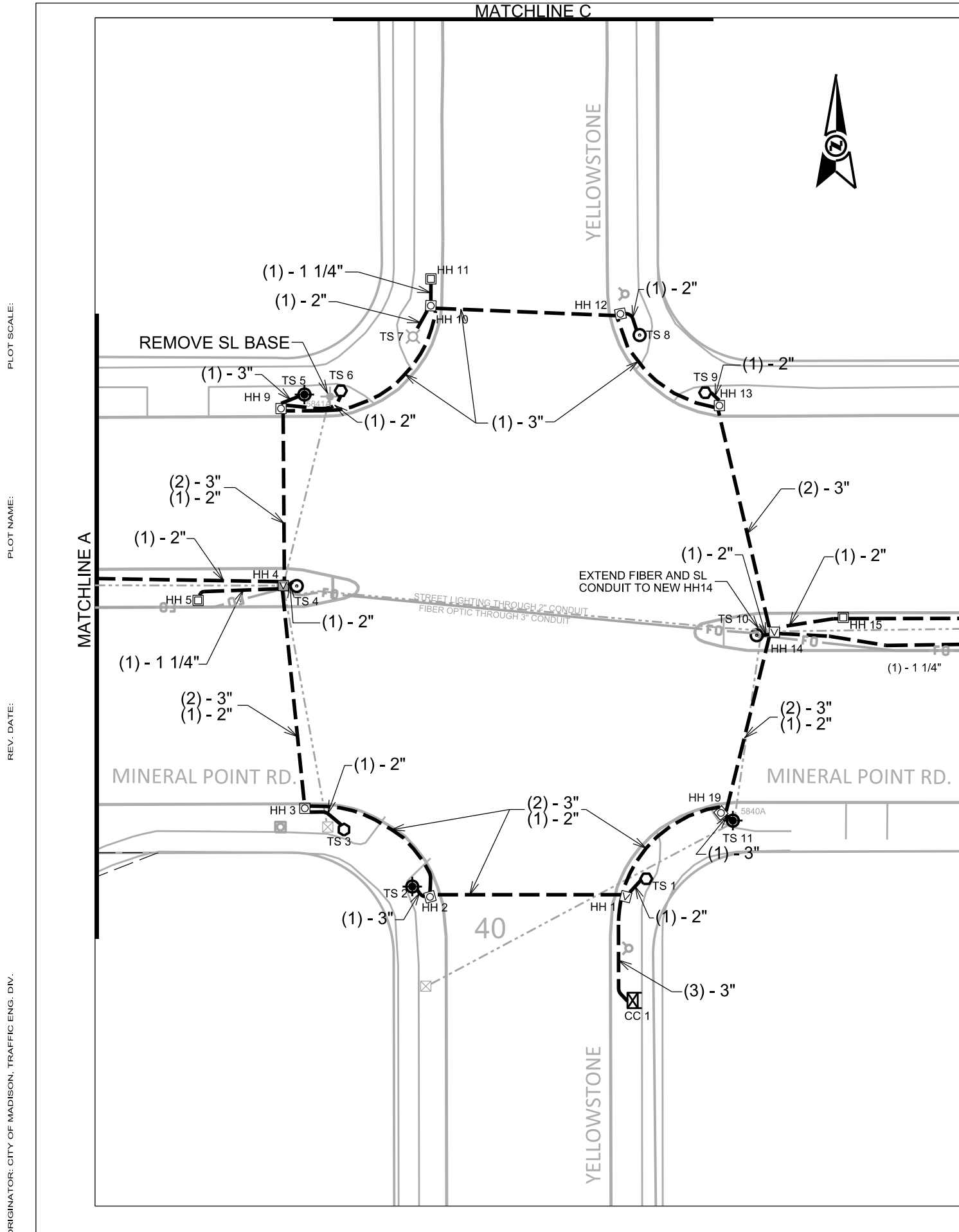


GENERAL ELECTRIC NOTES:

1. ALL LOCATIONS ARE APPROXIMATE. THE TRAFFIC ENGINEER SHALL APPROVE FINAL LOCATIONS, INCLUDING SETBACK, IN THE FIELD. THE CONTRACTOR SHALL NOTIFY GRETCHEN AVILES PINEIRO (266-4899) CITY TRAFFIC ENGINEERING, AT LEAST 24-HOURS IN ADVANCE OF NEEDING CONDUIT OR BASE LOCATIONS MARKED.
2. BASES INSTALLED IN TERRACE SHALL BE 4' FROM FACE OF CURB UNLESS OTHERWISE NOTED. SUBJECT TO NOTE 1 ABOVE.
3. THE CONTRACTOR SHALL DO ALL WORK IN ACCORDANCE WITH "CITY OF MADISON STANDARD SPECIFICATIONS FOR PUBLIC WORKS CONSTRUCTION, 2017 EDITION" AND ALL ADDENDUMS THERETO. ALL CONDUIT SHALL BE PVC, SCHEDULE 80 UNDER PAVEMENT OR SCHEDULE 40 OTHERWISE. PULL WIRE REQUIRED AS PER STANDARD SPECIFICATIONS.
4. THE CONTRACTOR SHALL CALL TROY VANT (267-1969) AT THE TRAFFIC ENGINEERING SHOP AT LEAST 24-HOURS IN ADVANCE OF POURING BASES OR BURYING CONDUIT TO ARRANGE FOR INSPECTION.
5. ANY WORK COMPLETED WITHOUT INSPECTION IS SUBJECT TO REJECTION.
6. EXISTING STREETLIGHTS SHALL BE IN SERVICE EACH AND EVERY NIGHT.
7. CONTRACTOR SHALL NOT DISRUPT THE EXISTING FIBER OPTIC LINE DURING CONSTRUCTION.
8. CONTRACTOR SHALL INSTALL ALL NEW BASES, CONDUIT, HANDHOLES, PER SHEET E-1, E-2, & REMOVE AND REPLACE EPOXY MARKINGS PER SHEET PM-1.
9. CONTRACTOR SHALL USE (1) - 2" PVC CONDUIT CONNECTING ALL SIGNAL BASES TO NEAREST HANDHOLE, UNLESS OTHERWISE NOTED.
10. ALL EXISTING CONDUITS AND ELECTRICAL HANDHOLES ARE TO REMAIN UNLESS AND UNTIL AUTHORIZED TO REMOVE BY TRAFFIC ENGINEERING.
11. THE CONTRACTOR SHALL ARRANGE FOR PICK UP OF THE FOLLOWING CITY FURNISHED MATERIALS, WHICH SHOULD BE ARRANGED FOR PICKUP BY CALLING DENNIS ROWE, TRAFFIC ENGINEERING SHOP, 266-9034 1120 SAYLE ST, AT LEAST 24-HOURS PRIOR TO NEEDING MATERIALS:

3/4"X19" ANCHOR BOLTS: 4 SETS OF 4 FOR TYPE G BASES
 1-1/4"X48" ANCHOR BOLTS: 6 SETS OF 4 FOR LB-8 BASES

LEGEND	
	TYPE P CONTROLLER CABINET
	INSTALL TYPE G BASE
	INSTALL LB-8 BASE (11" BOLT CIRCLE)
	INSTALL LB-8 BASE FOR SL+TS (11" BOLT CIRCLE)
	TYPE 1 ELECTRICAL HANDHOLE
	TYPE 3 ELECTRICAL HANDHOLE
	TYPE 5 ELECTRICAL HANDHOLE
	EXISTING ELECTRICAL HANDHOLE
	INSTALL SIGNAL CONDUIT (NUMBER) - SIZE
	TROMBONE ARM WITH SIGNAL HEAD
	SIGNAL HEAD
	PEDESTRIAN SIGNAL HEAD
	LOOP DETECTOR
	EXISTING ELECTRICAL CONDUIT
	FO - EXISTING FIBER OPTIC LINE
	EXISTING LB-8 BASE



PLOT SCALE:

PLOT NAME:

REV. DATE:

ORIGINATOR: CITY OF MADISON, TRAFFIC ENG. DIV.

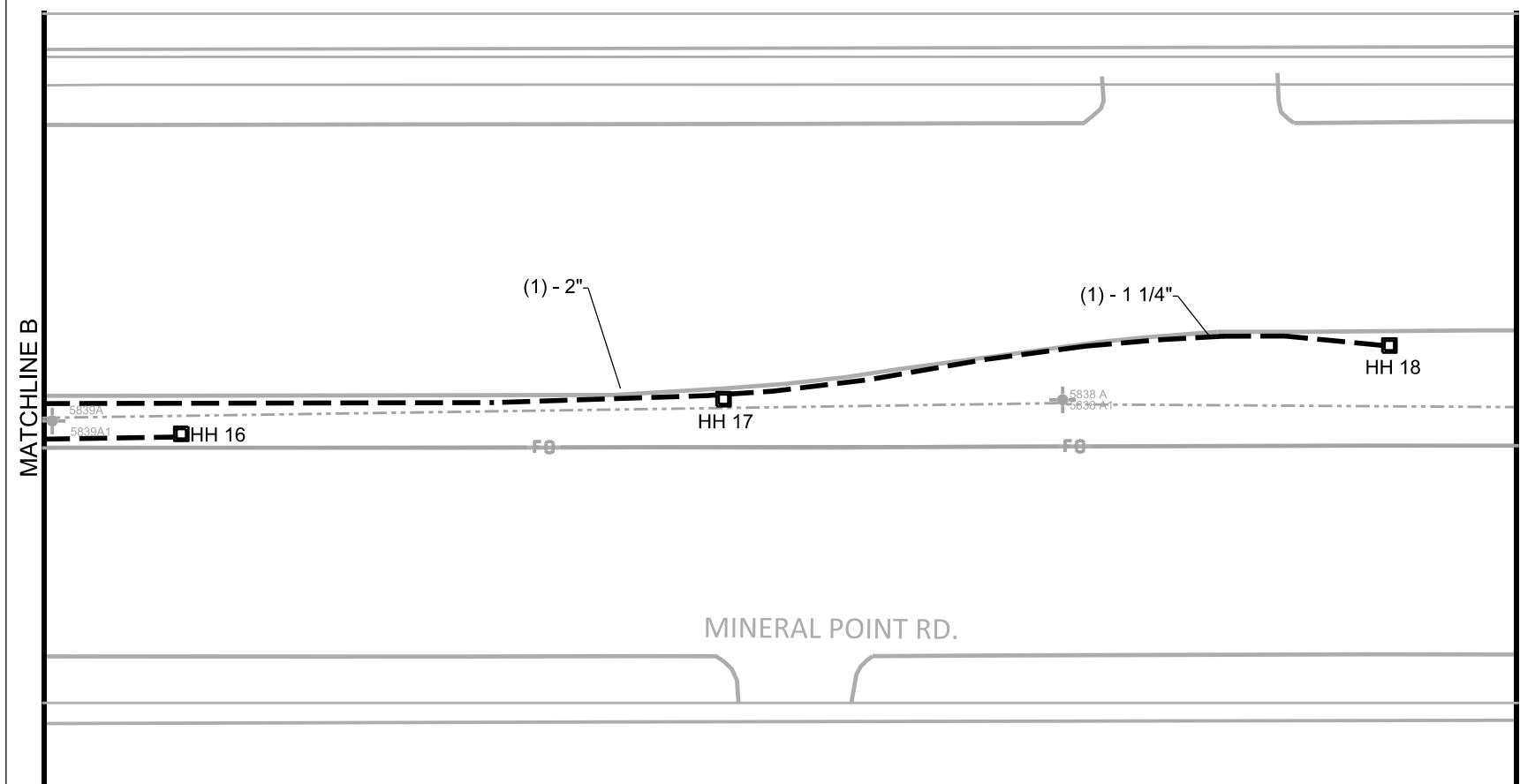
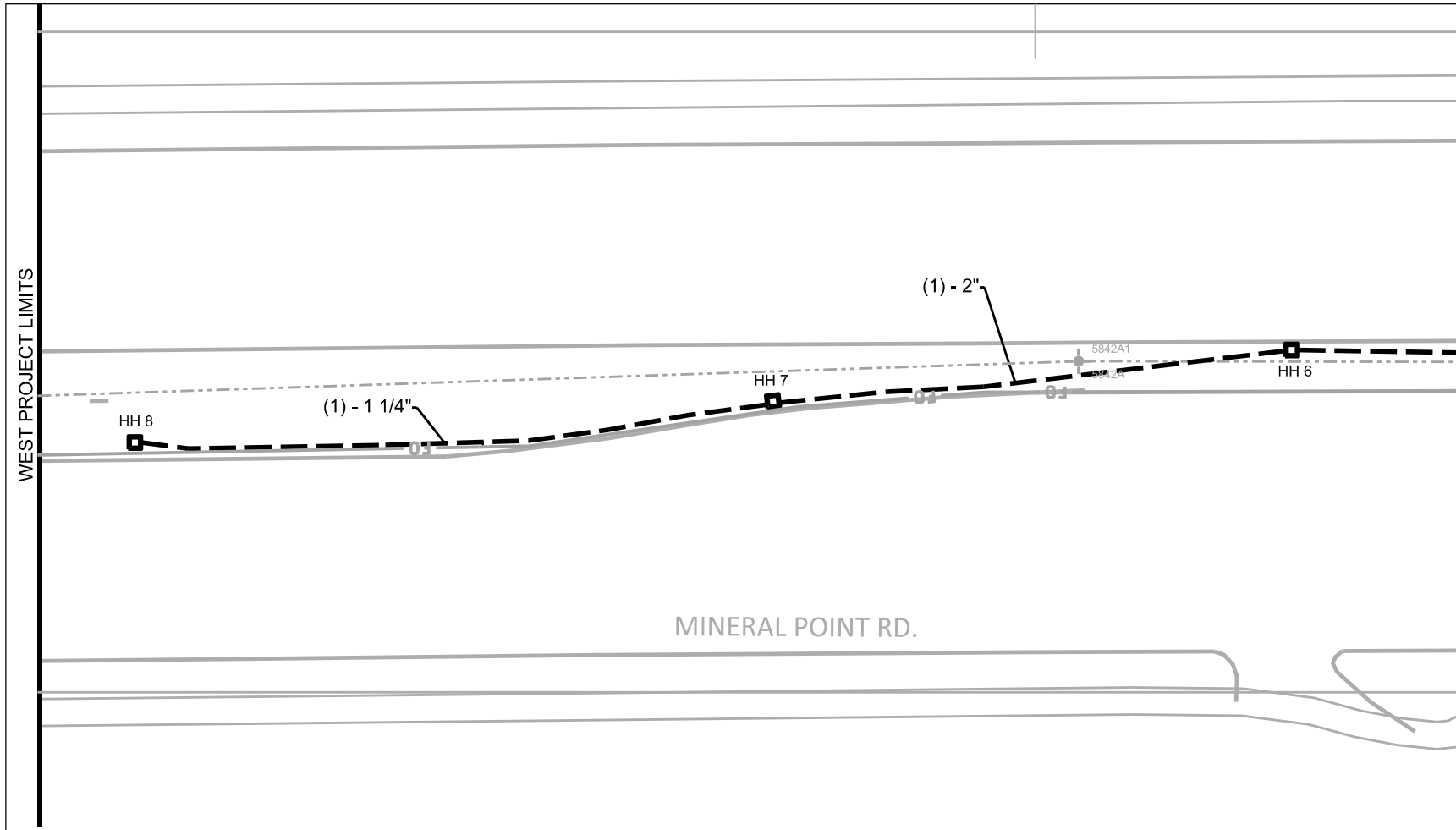


PLOT SCALE:

PLOT NAME:

REV. DATE:

ORIGINATOR: CITY OF MADISON, TRAFFIC ENG. DIV.



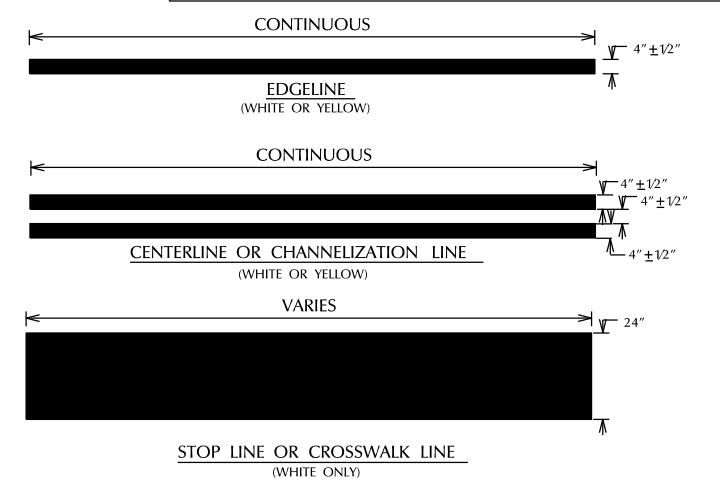
LEGEND

- ☒ TYPE P CONTROLLER CABINET
- ⊙ INSTALL TYPE G BASE
- ⊙ INSTALL LB-8 BASE (11" BOLT CIRCLE)
- ⊙ INSTALL LB-8 BASE FOR SL+TS (11" BOLT CIRCLE)
- ⊠ TYPE 1 ELECTRICAL HANDHOLE
- ⊠ TYPE 3 ELECTRICAL HANDHOLE
- ⊠ TYPE 5 ELECTRICAL HANDHOLE
- ⊙ EXISTING ELECTRICAL HANDHOLE
- INSTALL SIGNAL CONDUIT (NUMBER) - SIZE
- ⊠ TROMBONE ARM WITH SIGNAL HEAD
- ➔ SIGNAL HEAD
- ⊠ PEDESTRIAN SIGNAL HEAD
- ⊠ LOOP DETECTOR
- EXISTING ELECTRICAL CONDUIT
- FO— EXISTING FIBER OPTIC LINE
- ⊙ EXISTING LB-8 BASE

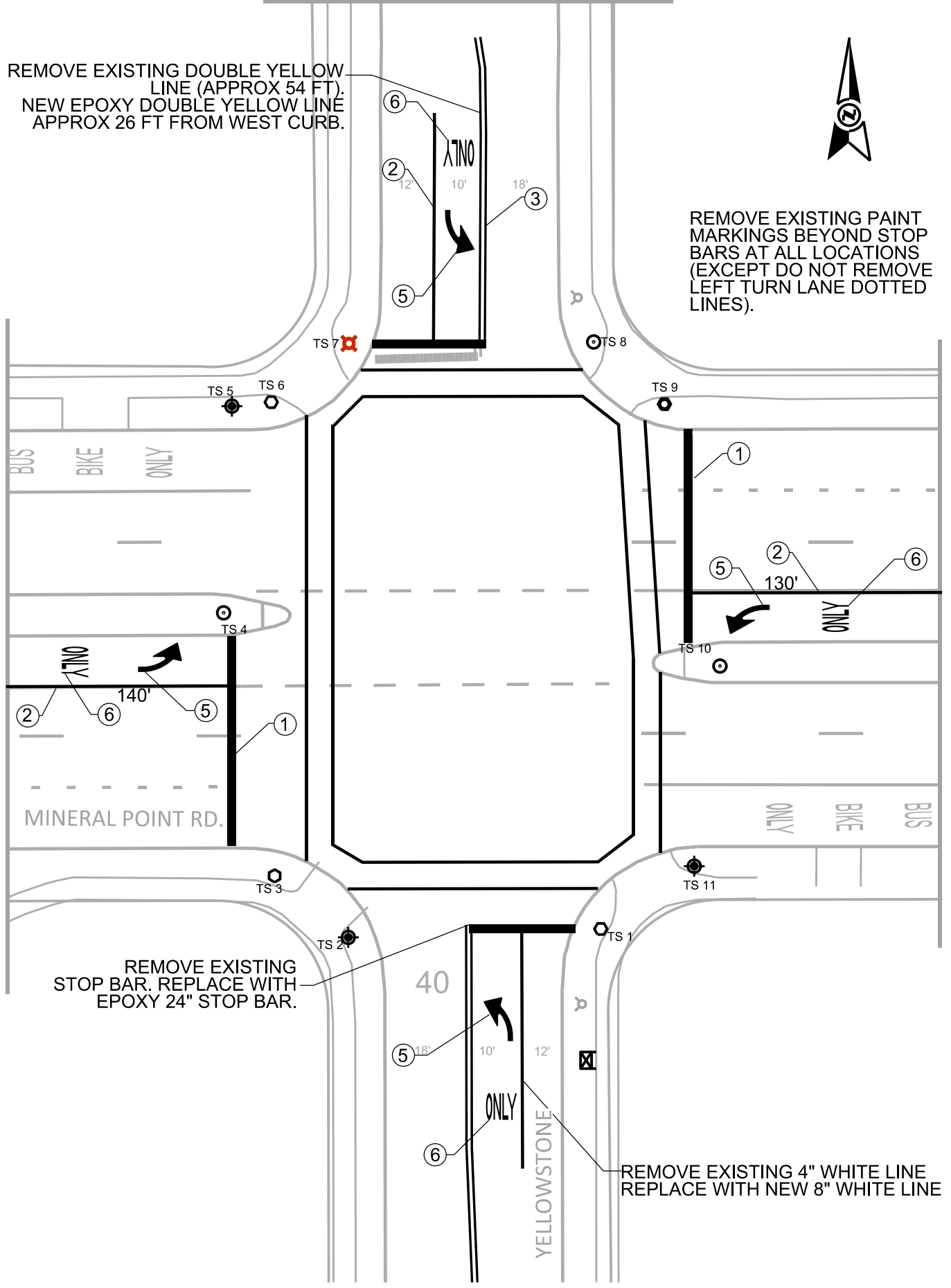
REMOVE EXISTING DOUBLE YELLOW LINE (APPROX 54 FT).
 NEW EPOXY DOUBLE YELLOW LINE APPROX 26 FT FROM WEST CURB.

REMOVE EXISTING PAINT MARKINGS BEYOND STOP BARS AT ALL LOCATIONS (EXCEPT DO NOT REMOVE LEFT TURN LANE DOTTED LINES).

- NOTES:
- ① PAVEMENT MARKING EPOXY, STOP LINE, 24-INCH
 - ② PAVEMENT MARKING EPOXY, 8-INCH
 - ③ PAVEMENT MARKING EPOXY, 4-INCH DOUBLE LINE
 - ④ PAVEMENT MARKING EPOXY, SYMBOL, RIGHT ARROW
 - ⑤ PAVEMENT MARKING EPOXY, SYMBOL, LEFT ARROW
 - ⑥ PAVEMENT MARKING EPOXY, WORD, ONLY
- ALL CROSSWALKS, PAVEMENT MARKING EPOXY, 6-INCH
- PROPOSED PAVEMENT MARKING, EPOXY
 - - - EXISTING PAVEMENT MARKING



PLOT SCALE:
 PLOT NAME:
 REV. DATE:
 ORIGINATOR: CITY OF MADISON, TRAFFIC ENG. DIV.



GENERAL NOTES FOR EPOXY PAVEMENT MARKINGS

THE CONTRACTOR SHALL APPLY ALL MARKINGS IN ACCORDANCE WITH THE STATE OF WISCONSIN MANUAL ON TRAFFIC CONTROL DEVICES.

AT STREET INTERSECTIONS, MARKINGS START OR END AT THE MARKED CROSSWALK. THE PROPERTY LINE EXTENDED, IF THERE IS NO MARKED CROSSWALK.

CROSSWALKS AND STOP BARS WILL BE PLACED NO CLOSER THAN 2' TO THE FACE OF CURB.

THE CONTRACTOR SHALL ADHERE TO THE TRAFFIC SPECIFICATION IN THE SPECIAL PROVISIONS AT ALL TIMES.

FOR MORE INFORMATION AND FULL SIZE PATTERNS FOR ARROWS & WORD LEGENDS ARE AVAILABLE AT THE CITY OF MADISON TRAFFIC ENGINEERING FIELD OPERATIONS FACILITY 1120 SAYLE ST. (608) 266-4767